

# BAND CLAMPS

- BC-106
- BC-108
- BC-110
- BC-112
- BC-114
- BC-116

## CHARACTERISTICS

<b>Material of Construction</b>	Galvanized Steel
<b>Gasket</b>	UL94 Neoprene
<b>Design</b>	Dual-Bolt
<b>Torque</b>	Not to exceed 40 in-lbs

**Band Clamps provided in sets of (2)**

## NOMENCLATURE

**BC-** \_\_\_\_\_

↑  
**Product Family**

BC = Band Clamp

**Size** \_\_\_\_\_

106 thru 116 | 6" thru 16"



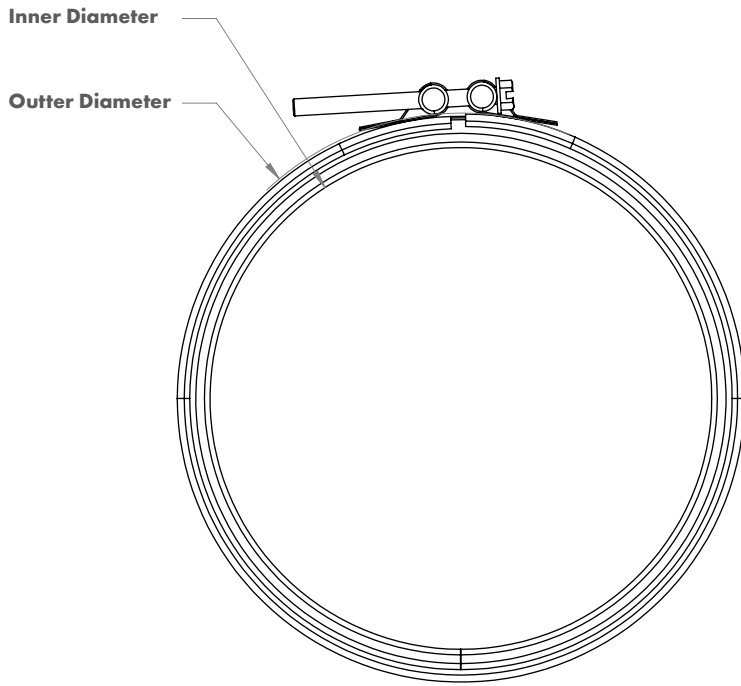
# BAND CLAMPS

## Dimensions

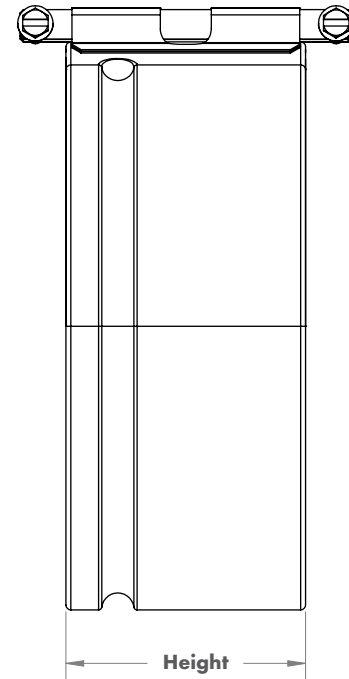
### SIZE CHART

Part #	Inner Diameter	Outer Diameter	Height
<b>BC-106</b>	[136.65] 5.38	[159.93] 6.3	[89.33] 3.52
<b>BC-108</b>	[187.45] 7.38	[211.93] 8.34	[89.5] 3.52
<b>BC-110</b>	[238.25] 9.38	[262.73] 10.34	[89.5] 3.52
<b>BC-112</b>	[289.05] 11.38	[313.53] 12.34	[89.5] 3.52
<b>BC-114</b>	[339.85] 13.38	[364.33] 14.34	[89.5] 3.52
<b>BC-116</b>	[390.65] 15.38	[415.13] 16.34	[89.5] 3.52

Top View



Side View



#### Key

[BRACKETS] = MILLIMETERS (mm)

NO BRACKETS = INCHES (in)