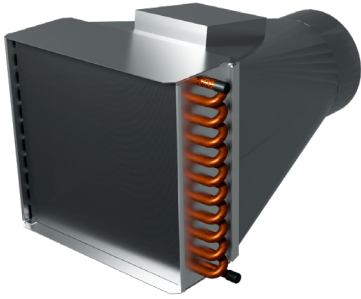


REHEAT COIL AND TRANSITION

☐ Reference tables for part numbers



Reheat Coil and Transition

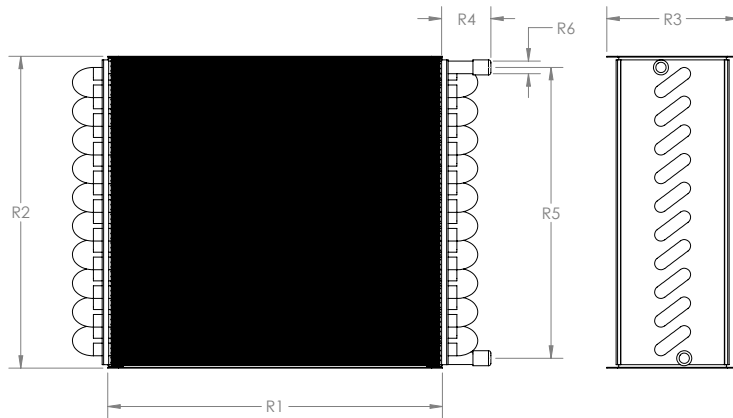
REHEAT COIL CHARACTERISTICS

Case Construction	20 gauge galvanized steel casing
Fin Construction	1-¼ in x 1.08 rippled aluminum
Number of Fins	10 fins per inch (FPI) standard
Tube Construction	1/2 in O.D staggered copper tubing 5/8 in O.D staggered copper tubing 7/8 in O.D staggered copper tubing
Transition Connection	Slip and drive
Mounting Orientation	Universal
Tube Connections	Sweat connection

TRANSITION CHARACTERISTICS

Construction	Galvanized steel
Valve Connection	Slip fit
Mounting Orientation	Universal

⚠ Do NOT handle reheat coils by the manifold. Doing so may damage product and void warranty.

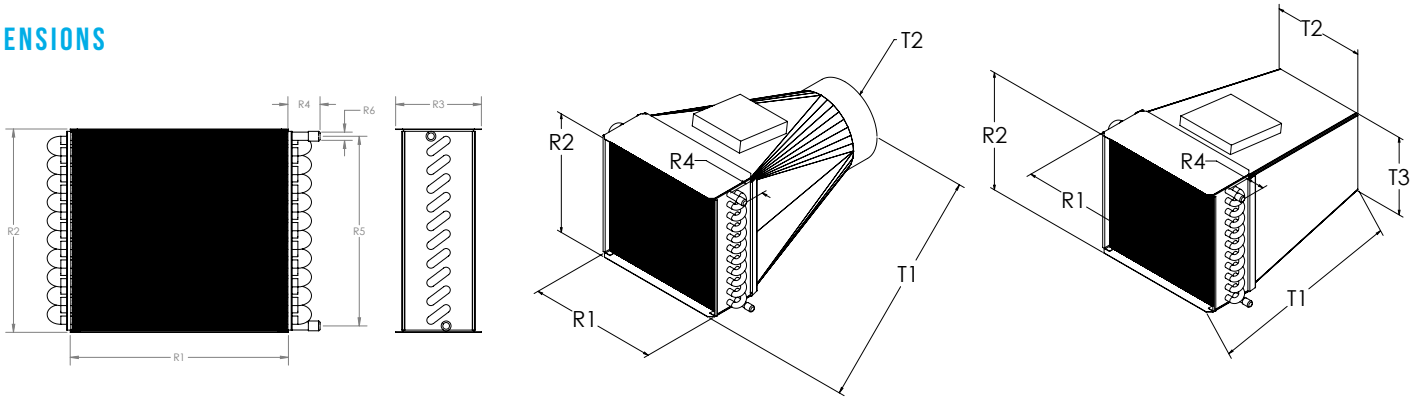


X	Reheat Coil	Dimensions (in)						Dimensions (mm)					
		R1	R2	R3	R4	R5	R6	R1	R2	R3	R4	R5	R6
	RHC-1A-000-0C1	12.00	10.00	3.125	3.00	8.75	0.50	305	254	79	76	222	13
	RHC-1B-000-0C1	14.00	12.50	3.125	3.00	11.25	0.50	356	318	79	76	286	13
	RHC-1C-000-0C1	16.00	15.00	3.125	3.50	13.75	0.625	407	381	79	89	349	16
	RHC-1D-000-0C1	20.00	17.50	3.125	3.50	16.25	0.625	508	445	79	89	413	16
	RHC-1E-000-0C1	24.00	17.50	3.125	3.50	16.25	0.625	610	445	79	89	413	16
	RHC-1F-000-0C1	32.00	17.50	3.125	3.50	16.25	0.625	813	445	79	89	413	16
	RHC-2A-000-0C1	12.00	10.00	4.50	3.00	9.375	0.625	305	254	114	76	238	16
	RHC-2B-000-0C1	14.00	12.50	4.50	3.00	11.875	0.625	356	318	114	76	302	16
	RHC-2C-000-0C1	16.00	15.00	4.50	4.00	13.00	0.875	407	381	114	102	330	22
	RHC-2D-000-0C1	20.00	17.50	4.50	4.00	15.50	0.875	508	445	114	102	394	22
	RHC-2E-000-0C1	24.00	17.50	4.50	4.00	15.50	0.875	610	445	114	102	394	22
	RHC-2F-000-0C1	32.00	17.50	4.50	4.00	15.50	0.875	813	445	114	102	394	22

REHEAT COIL AND TRANSITION

☐ Reference part number call out

DIMENSIONS



X	Reheat Coil & Transition	Dimensions (in)						Dimensions (mm)						Dimensions (in)			Dimensions (mm)			Access Panel	
		R1	R2	R3	R4	R5	R6	R1	R2	R3	R4	R5	R6	T1	T2	T3	T1	T2	T3	L x W (in)	L x W (mm)
	RHC-1A-106-0C1	12	10	3.125	3	8.75	0.5	305	254	79	76	222	13	22.125	6	-	562	152	-	6X6	152 x 152
	RHC-1B-106-0C1	14	12.5	3.125	3	11.25	0.5	356	318	79	76	286	13	22.125	6	-	562	152	-	6X6	152 x 152
	RHC-1A-108-0C1	12	10	3.125	3	8.75	0.5	305	254	79	76	222	13	22.125	8	-	562	203	-	6X6	152 x 152
	RHC-1B-108-0C1	14	12.5	3.125	3	11.25	0.5	356	318	79	76	286	13	22.125	8	-	562	203	-	6X6	152 x 152
	RHC-1C-108-0C1	16	15	3.125	3.5	13.75	0.625	407	381	79	89	349	16	22.125	8	-	562	203	-	6X6	152 x 152
	RHC-1C-110-0C1	16	15	3.125	3.5	13.75	0.625	407	381	79	89	349	16	22.125	10	-	562	254	-	6X6	152 x 152
	RHC-1D-110-0C1	20	17.5	3.125	3.5	16.25	0.625	508	445	79	89	413	16	24.125	10	-	613	254	-	8X8	203 x 203
	RHC-1D-112-0C1	20	17.5	3.125	3.5	16.25	0.625	508	445	79	89	413	16	24.125	12	-	613	305	-	8X8	203 x 203
	RHC-1E-112-0C1	24	17.5	3.125	3.5	16.25	0.625	610	445	79	89	413	16	24.125	12	-	613	305	-	8X8	203 x 203
	RHC-1E-114-0C1	24	17.5	3.125	3.5	16.25	0.625	610	445	79	89	413	16	24.125	14	-	613	356	-	8X8	203 x 203
	RHC-1F-114-0C1	32	17.5	3.125	3.5	16.25	0.625	813	445	79	89	413	16	30.125	14	-	765	356	-	10X10	254 x 254
	RHC-1F-116-0C1	32	17.5	3.125	3.5	16.25	0.625	813	445	79	89	413	16	30.125	16	-	765	406	-	10X10	254 x 254
	RHC-1F-212-0C1	32	17.5	3.125	3.5	16.25	0.625	813	445	79	89	413	16	30.125	26	13	765	660	330	10X10	254 x 254
	RHC-1F-214-0C1	32	17.5	3.125	3.5	16.25	0.625	813	445	79	89	413	16	30.125	30	15	765	762	381	10X10	254 x 254
	RHC-1F-216-0C1	32	17.5	3.125	3.5	16.25	0.625	813	445	79	89	413	16	30.125	34	17	765	864	432	10X10	254 x 254
	RHC-2A-106-0C1	12	10	4.5	3	9.375	0.625	305	254	114	76	238	16	23.5	6	-	597	152	-	6X6	152 x 152
	RHC-2B-106-0C1	14	12.5	4.5	3	11.875	0.625	356	318	114	76	302	16	23.5	6	-	597	152	-	6X6	152 x 152
	RHC-2A-108-0C1	12	10	4.5	3	9.375	0.625	305	254	114	76	238	16	23.5	8	-	597	203	-	6X6	152 x 152
	RHC-2B-108-0C1	14	12.5	4.5	3	11.875	0.625	356	318	114	76	302	16	23.5	8	-	597	203	-	6X6	152 x 152
	RHC-2C-108-0C1	16	15	4.5	4	13	0.875	407	381	114	102	330	22	23.5	8	-	597	203	-	6X6	152 x 152
	RHC-2C-110-0C1	16	15	4.5	4	13	0.875	407	381	114	102	330	22	23.5	10	-	597	254	-	6X6	152 x 152
	RHC-2D-110-0C1	20	17.5	4.5	4	15.5	0.875	508	445	114	102	394	22	25.5	10	-	648	254	-	8X8	203 x 203
	RHC-2D-112-0C1	20	17.5	4.5	4	15.5	0.875	508	445	114	102	394	22	25.5	12	-	648	305	-	8X8	203 x 203
	RHC-2E-112-0C1	24	17.5	4.5	4	15.5	0.875	610	445	114	102	394	22	25.5	12	-	648	305	-	8X8	203 x 203
	RHC-2E-114-0C1	24	17.5	4.5	4	15.5	0.875	610	445	114	102	394	22	25.5	14	-	648	356	-	8X8	203 x 203
	RHC-2F-114-0C1	32	17.5	4.5	4	15.5	0.875	813	445	114	102	394	22	31.5	14	-	800	356	-	10X10	254 x 254
	RHC-2F-116-0C1	32	17.5	4.5	4	15.5	0.875	813	445	114	102	394	22	31.5	16	-	800	406	-	10X10	254 x 254
	RHC-2F-212-0C1	32	17.5	4.5	4	15.5	0.875	813	445	114	102	394	22	31.5	26	13	800	660	330	10X10	254 x 254
	RHC-2F-214-0C1	32	17.5	4.5	4	15.5	0.875	813	445	114	102	394	22	31.5	30	15	800	762	381	10X10	254 x 254
	RHC-2F-216-0C1	32	17.5	4.5	4	15.5	0.875	813	445	114	102	394	22	31.5	34	17	800	864	432	10X10	254 x 254

REHEAT COIL AND TRANSITION

☐ Reference part number call out

PERFORMANCE

Entering Air Temperature (EAT) 55 °F (13 °C)

Entering Water Temperature (EWT) 180 °F (82 °C)

Coil data is based on 125 °F (51 °C) temperature difference between entering air and entering water

 GPM and CFM above or below published values is NOT recommended for heating

Reheat Coil	Water Flow (GPM)	Water Pd (ft. w.g.)		Airflow (CFM)			LAT Range (°F)
				50	400	850	
RHC-1A-000-0C1 12" x 10"- 1 ROW CLV: 106 & 108	0.5	0.12	MBH	3.98	9.56	11.50	129 to 68
	1.0	0.41		4.28	11.70	14.83	134 to 71
	2.0	1.36		4.45	13.25	17.44	137 to 74
	3.0	2.77		4.51	13.89	18.58	139 to 75
	4.0	4.59		4.55	14.24	19.23	139 to 76
RHC-2A-000-0C1 12" x 10"- 2 ROW CLV: 106 & 108	1.0	0.12	MBH	5.82	19.18	24.25	163 to 81
	2.0	0.41		6.05	22.88	30.69	167 to 88
	3.0	0.82		6.13	24.50	33.77	169 to 92
	4.0	1.36		6.17	25.43	35.59	169 to 94
	5.0	2.02		6.20	26.03	36.81	170 to 95

Reheat Coil	Water Flow (GPM)	Water Pd (ft. w.g.)		Airflow (CFM)			LAT Range (°F)
				50	700	1500	
RHC-1B-000-0C1 14" x 12.5"- 1 ROW CLV: 106 & 108	0.5	0.17	MBH	4.42	13.31	15.53	137 to 65
	1.0	0.57		4.72	17.15	21.22	143 to 68
	2.0	1.90		4.89	20.08	25.99	146 to 71
	3.0	3.86		4.96	21.31	28.13	147 to 72
	4.0	6.39		4.99	22.01	29.36	147 to 73
RHC-2B-000-0C1 14" x 12.5"- 2 ROW CLV: 106 & 108	1.0	0.17	MBH	6.05	27.63	33.24	167 to 76
	2.0	0.57		6.26	34.32	44.61	171 to 83
	3.0	1.15		6.33	37.52	50.34	172 to 86
	5.0	2.81		6.39	40.59	56.17	173 to 90
	8.0	6.39		6.42	42.61	60.17	174 to 92

Reheat Coil	Water Flow (GPM)	Water Pd (ft. w.g.)		Airflow (CFM)			LAT Range (°F)
				250	850	1700	
RHC-1C-000-0C1 16" x 15"- 1 ROW CLV: 108 & 110	1.0	0.11	MBH	12.75	19.44	23.01	102 to 68
	2.0	0.36		14.45	23.89	29.66	109 to 71
	3.0	0.74		15.15	25.94	32.93	111 to 73
	4.0	1.22		15.53	27.13	34.89	113 to 74
	5.0	1.80		15.78	27.92	36.21	113 to 75
RHC-2C-000-0C1 16" x 15"- 2 ROW CLV: 108 & 110	2.0	0.24	MBH	22.56	40.60	50.69	139 to 83
	4.0	0.81		24.52	48.17	63.40	146 to 90
	6.0	1.65		25.27	51.38	69.29	149 to 93
	8.0	2.73		25.67	53.21	72.72	150 to 95
	10.0	4.03		25.91	54.39	74.99	151 to 96

REHEAT COIL AND TRANSITION

☐ Reference part number call out

PERFORMANCE

Entering Air Temperature (EAT) 55 °F (13 °C)

Entering Water Temperature (EWT) 180 °F (82 °C)

Coil data is based on 125 °F (51 °C) temperature difference between entering air and entering water

 GPM and CFM above or below published values is NOT recommended for heating

Reheat Coil	Water Flow (GPM)	Water Pd (ft. w.g.)		Airflow (CFM)			LAT Range (°F)
				350	1300	2400	
RHC-1D-000-OC1 20"x17.5"-1 ROW CLV: 110 & 112	1.0	0.15	MBH	17.26	26.20	29.89	101 to 67
	2.0	0.50		20.00	33.55	40.13	108 to 71
	3.0	1.02		21.13	37.02	45.29	111 to 73
	4.0	1.68		21.75	39.06	48.43	113 to 74
	5.0	2.49		22.15	40.42	50.55	114 to 75
RHC-2D-000-OC1 20"x 17.5"- 2 ROW CLV: 110 & 112	2.0	0.33	MBH	30.68	55.22	65.70	136 to 80
	4.0	1.10		33.94	68.19	85.71	145 to 88
	6.0	2.24		35.19	73.93	95.24	148 to 92
	8.0	3.71		35.86	77.20	100.86	150 to 94
	10.0	5.48		36.28	79.32	104.58	151 to 95

Reheat Coil	Water Flow (GPM)	Water Pd (ft. w.g.)		Airflow (CFM)			LAT Range (°F)
				500	1675	2600	
RHC-1E-000-OC1 24"x17.5"-1 ROW CLV: 112 & 114"	1.0	0.17	MBH	21.30	30.00	32.71	94 to 67
	2.0	0.57		25.46	39.65	44.93	102 to 71
	3.0	1.17		27.24	44.64	51.02	105 to 73
	4.0	1.93		28.24	47.15	54.81	107 to 75
	5.0	2.85		28.87	49.02	57.38	109 to 75
RHC-2E-000-OC1 24"x17.5"-2 ROW CLV 112 & 114"	2.0	0.38	MBH	39.35	63.87	71.66	127 to 81
	4.0	1.27		44.79	81.42	95.33	138 to 89
	6.0	2.58		46.94	89.45	106.77	142 to 93
	8.0	4.26		48.10	94.07	113.54	144 to 95
	10.0	6.30		48.83	97.09	118.04	145 to 97

Reheat Coil	Water Flow (GPM)	Water Pd (ft. w.g.)		Airflow (CFM)			LAT Range (°F)
				600	2800	5500	
RHC-1F-000-OC1 32"x17.5"- 1 ROW CLV: 114, 116, 212, 214 216	1.5	0.44	MBH	28.87	45.88	52.14	100 to 64
	2.0	0.72		31.02	52.11	60.66	103 to 65
	3.0	1.47		33.51	60.13	72.18	107 to 67
	4.0	2.43		34.91	65.03	79.62	109 to 68
	5.0	3.59		35.81	68.45	84.84	110 to 69
RHC-2F-000-OC1 32"x17.5"-2 ROW CLV: 114, 116, 212, 214 216	2.0	0.47	MBH	46.67	80.11	90.47	127 to 70
	4.0	1.59		54.15	109.76	132.98	139 to 77
	6.0	3.24		57.14	124.4	156.08	143 to 81
	8.0	5.36		58.76	133.13	170.56	146 to 84
	10.0	7.92		59.77	138.95	180.51	147 to 85